



GAT MONTHLY MEMBERSHIP PROGRESS REPORT

Results as of: 6/30/2022

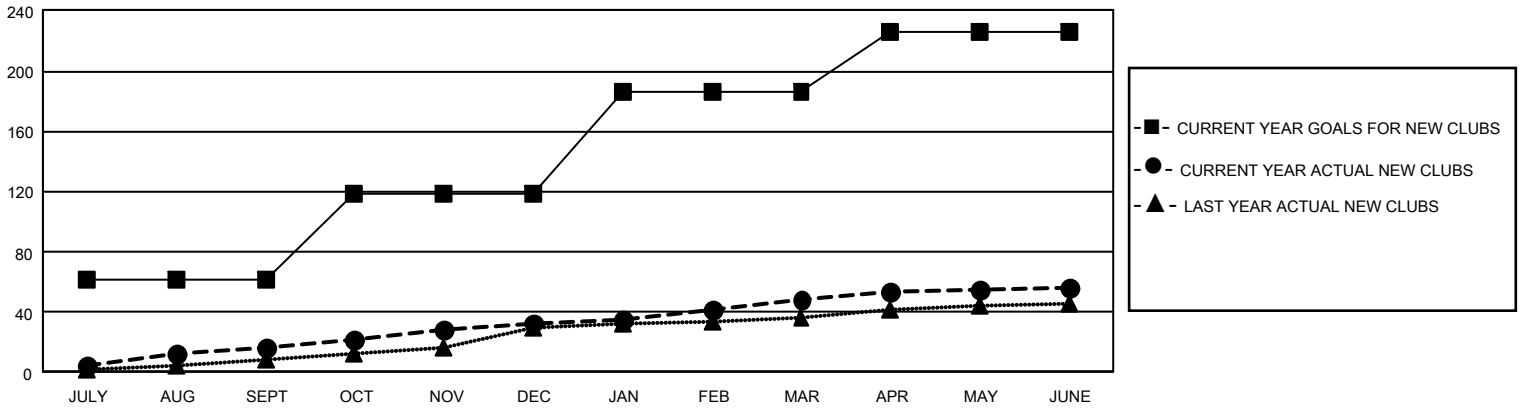
GAT Constitutional Area 5 - Korea

REPORT DOES NOT INCLUDE CLUBS IN UNDISTRICTED AREAS.

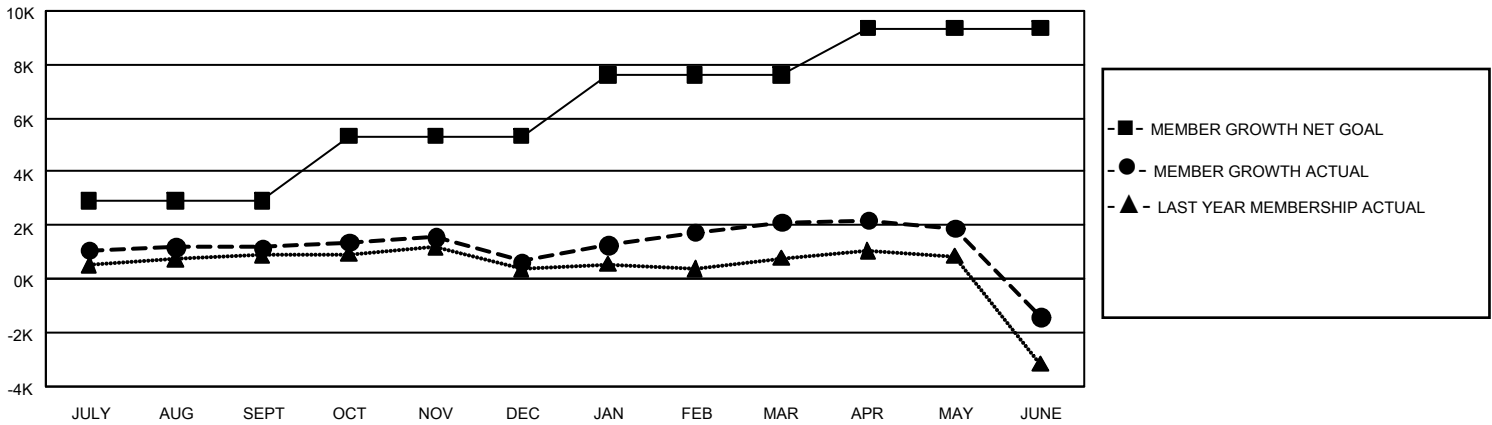
Clubs			
RESULTS FOR 2021-2022			
QUARTER	NEW CLUB GOAL	NEW CLUBS	DROPPED CLUBS
JULY/AUG/SEPT	183	16	27
OCT/NOV/DEC	174	17	10
JAN/FEB/MAR	201	15	2
APR/MAY/JUNE	120	8	23

Members			
RESULTS FOR 2021-2022			
QUARTER	MEMBER GROWTH NET GOAL	MEMBER GROWTH ACTUAL	DROPPED MEMBERS ACTUAL (including transfers)
JULY/AUG/SEPT	2925	3,743	2,365
OCT/NOV/DEC	2400	2,161	2,604
JAN/FEB/MAR	2293	2,288	785
APR/MAY/JUNE	1738	2,172	5,560

GOALS AND ACTUAL NEW CLUBS CUMULATIVE



GOALS AND ACTUAL MEMBERS CUMULATIVE



DROPPED CLUBS: 62	1,569 CLUBS OF 2,096 ADDED 1 OR MORE NEW MEMBERS	GENDER DISTRIBUTION	
		MALE 53,878 (75.01%) FEMALE 17,948 (24.99%) NON BINARY 0 (0.00%) PREFER NOT TO ANSWER 0 (0.00%)	
DROPPED MEMBERS		CLICK HERE FOR CUMULATIVE MEMBERSHIP DATA	
DECEASED 238 CLUB CANCELLED 683 OTHER 10,393 TOTAL 11,314	TOTAL FAMILY UNIT MEMBERS 5,155 FAMILY MEMBERS PAYING HALF DUES 2,983		